



SECOND FLOOR



JOEL M. GRIECO

Direct: +1 860 616 1443
Mobile: +1 860 593 2078
joel.grieco@cushwake.com

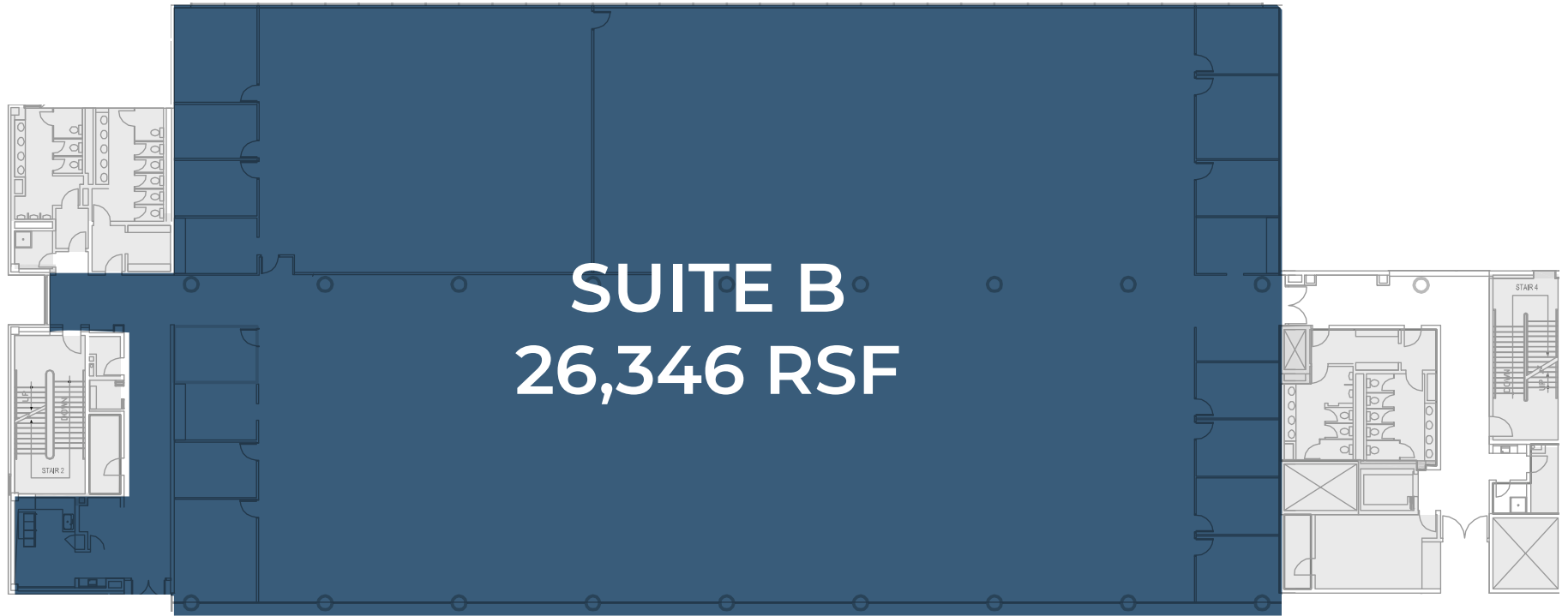
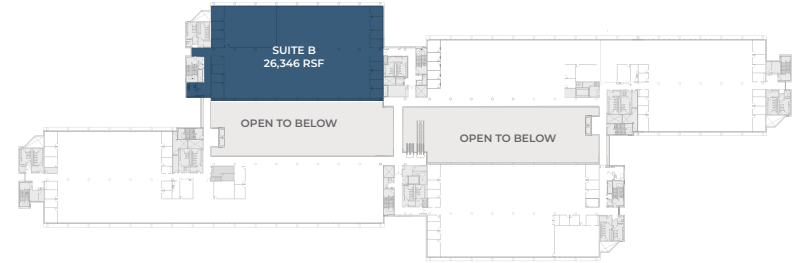
TIMOTHY D'ADDABBO

Direct: +1 860 616 1434
Office: +1 860 249 0900
timothy.daddabbo@cushwake.com



SECOND FLOOR

SUITE B - 26,346 RSF



1300 HALL BOULEVARD
BLOOMFIELD, CT

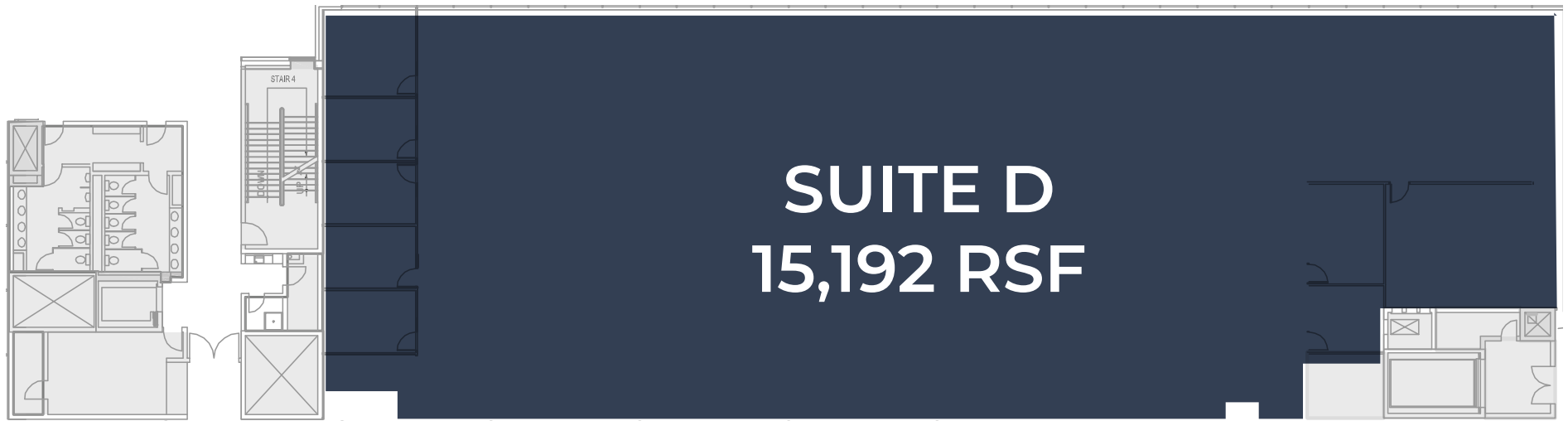
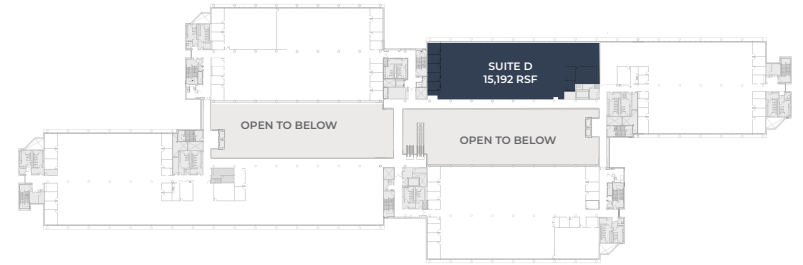
JOEL M. GRIECO
+1 860 616 1443
joel.grieco@cushwake.com

TIMOTHY D'ADDABBO
+1 860 616 1434
timothy.daddabbo@cushwake.com



SECOND FLOOR

SUITE D - 15,192 RSF



1300 HALL BOULEVARD
BLOOMFIELD, CT

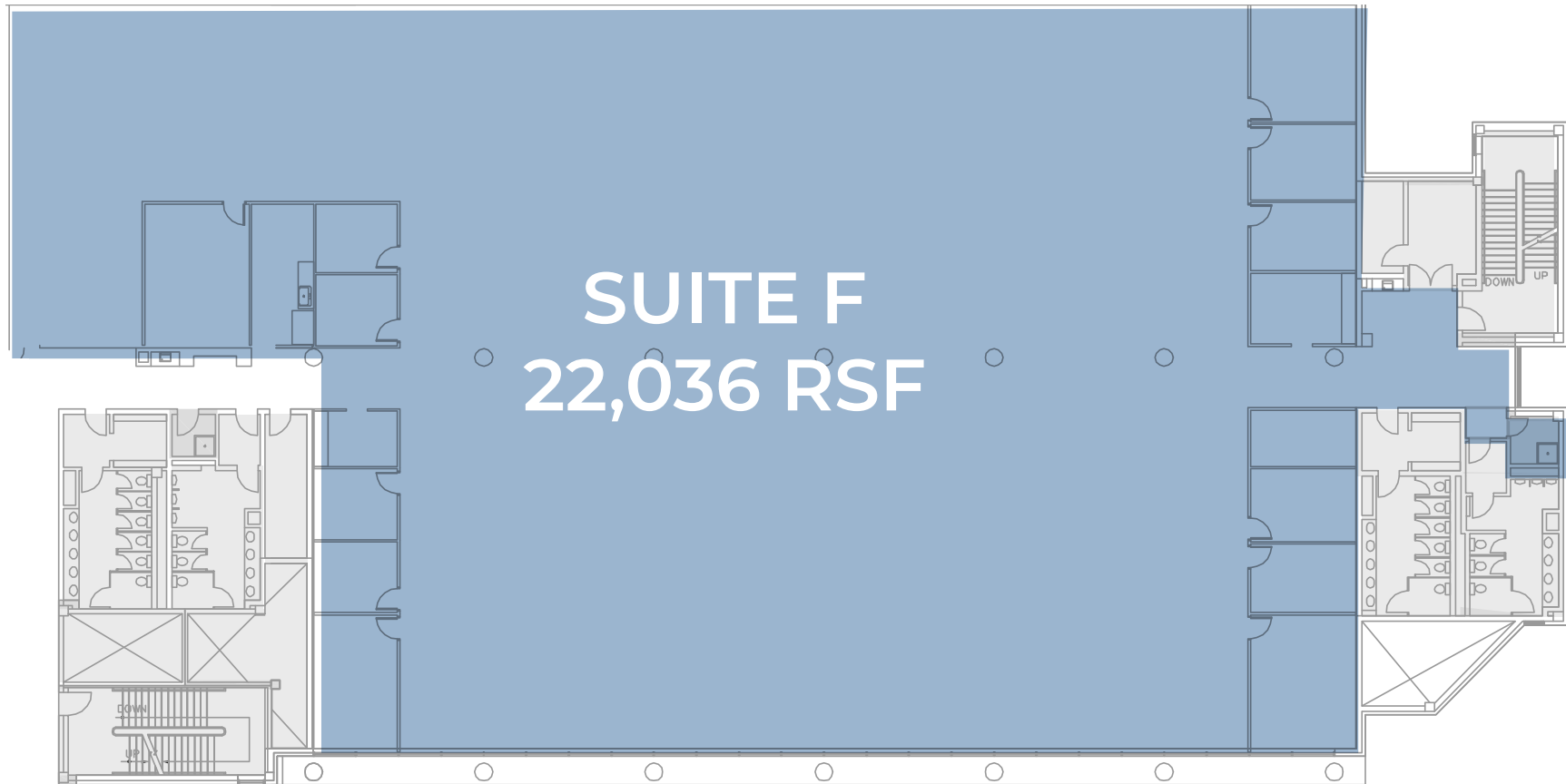
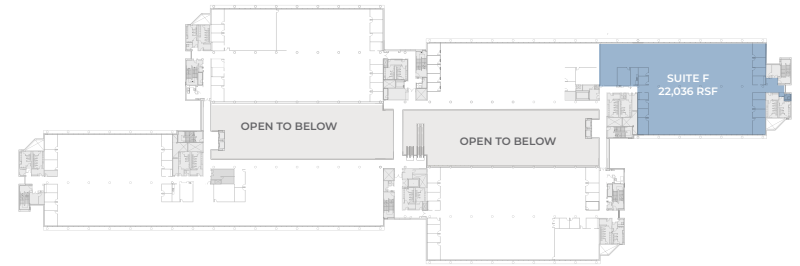
JOEL M. GRIECO
+1 860 616 1443
joel.grieco@cushwake.com

TIMOTHY D'ADDABBO
+1 860 616 1434
timothy.daddabbo@cushwake.com



SECOND FLOOR

SUITE F - 22,036 RSF



1300 HALL BOULEVARD
BLOOMFIELD, CT

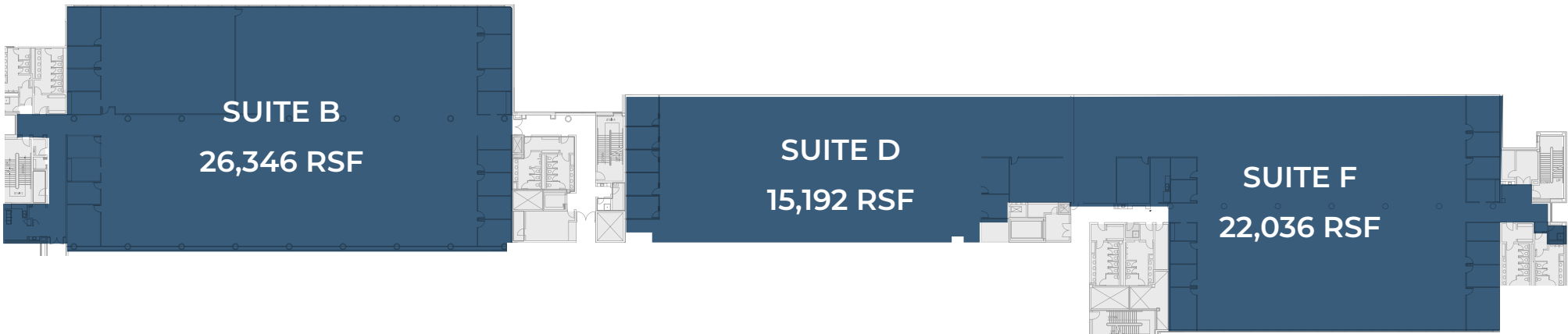
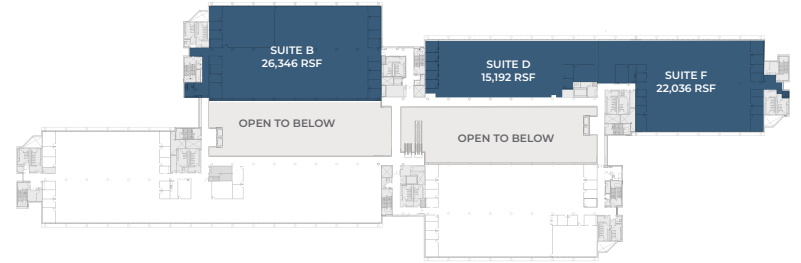
JOEL M. GRIECO
+1 860 616 1443
joel.grieco@cushwake.com

TIMOTHY D'ADDABBO
+1 860 616 1434
timothy.daddabbo@cushwake.com



CONTIGUOUS SECOND FLOOR

SUITES B, D, & F - 63,574 RSF



1300 HALL BOULEVARD
BLOOMFIELD, CT

JOEL M. GRIECO
+1 860 616 1443
joel.grieco@cushwake.com

TIMOTHY D'ADDABBO
+1 860 616 1434
timothy.daddabbo@cushwake.com

