

JOEL M. GRIECO

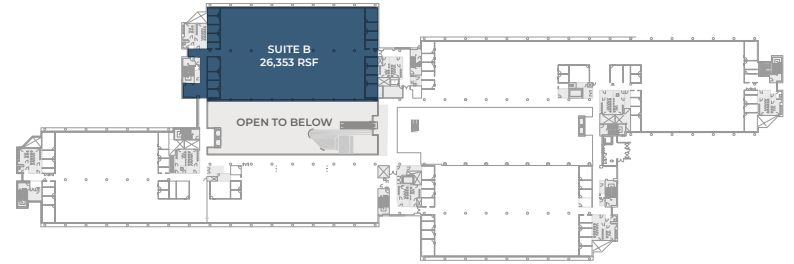
Direct: +1 860 616 1443
 Mobile: +1 860 593 2078
joel.grieco@cushwake.com

TIMOTHY D'ADDABBO

Direct: +1 860 616 1434
 Office: +1 860 249 0900
timothy.daddabbo@cushwake.com

FIRST FLOOR

SUITE B - 26,353 RSF



1300 HALL BOULEVARD
BLOOMFIELD, CT

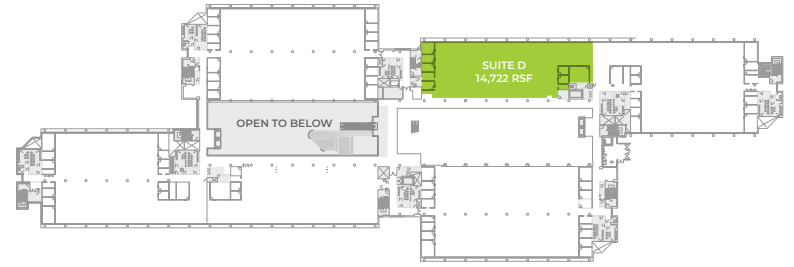
JOEL M. GRIECO
+1 860 616 1443
joel.grieco@cushwake.com

TIMOTHY D'ADDABBO
+1 860 616 1434
timothy.daddabbo@cushwake.com



FIRST FLOOR

SUITE D - 14,722 RSF



1300 HALL BOULEVARD
BLOOMFIELD, CT

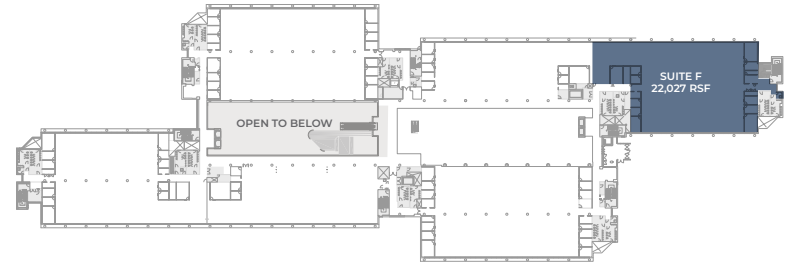
JOEL M. GRIECO
+1 860 616 1443
joel.grieco@cushwake.com

TIMOTHY D'ADDABBO
+1 860 616 1434
timothy.daddabbo@cushwake.com



FIRST FLOOR

SUITE F - 22,027 RSF



1300 HALL BOULEVARD
BLOOMFIELD, CT

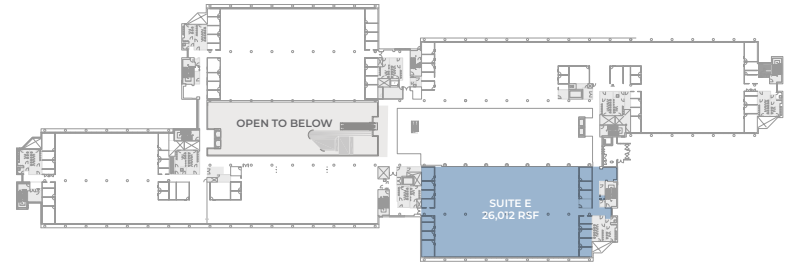
JOEL M. GRIECO
+1 860 616 1443
joel.grieco@cushwake.com

TIMOTHY D'ADDABBO
+1 860 616 1434
timothy.daddabbo@cushwake.com



FIRST FLOOR

SUITE E - 26,012 RSF



1300 HALL BOULEVARD
BLOOMFIELD, CT

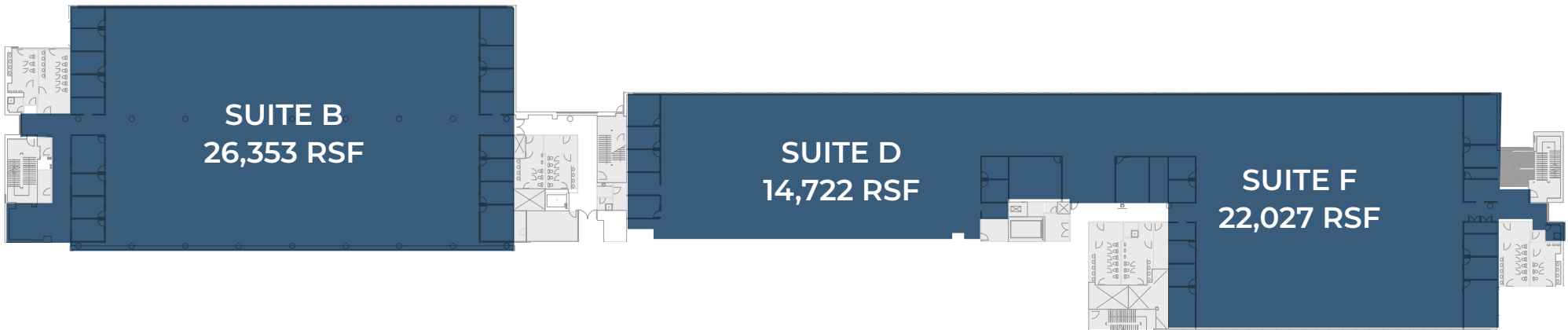
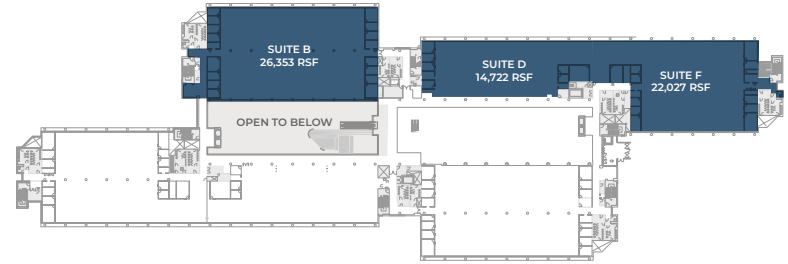
JOEL M. GRIECO
+1 860 616 1443
joel.grieco@cushwake.com

TIMOTHY D'ADDABBO
+1 860 616 1434
timothy.daddabbo@cushwake.com



CONTIGUOUS FIRST FLOOR

SUITES B, D, & F - 63,102 RSF



1300 HALL BOULEVARD
BLOOMFIELD, CT

JOEL M. GRIECO
+1 860 616 1443
joel.grieco@cushwake.com

TIMOTHY D'ADDABBO
+1 860 616 1434
timothy.daddabbo@cushwake.com

